



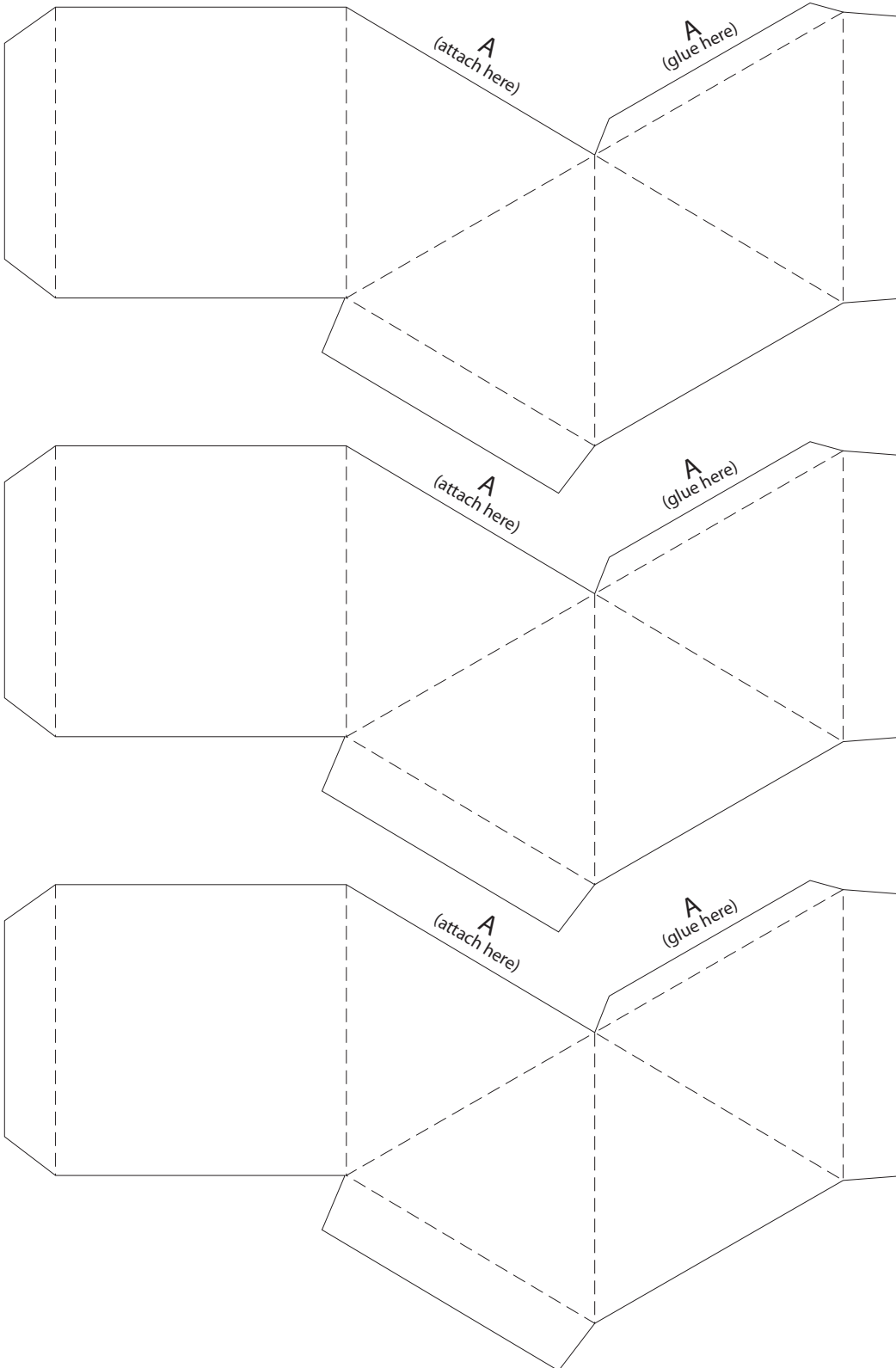
www.makingitsweet.com

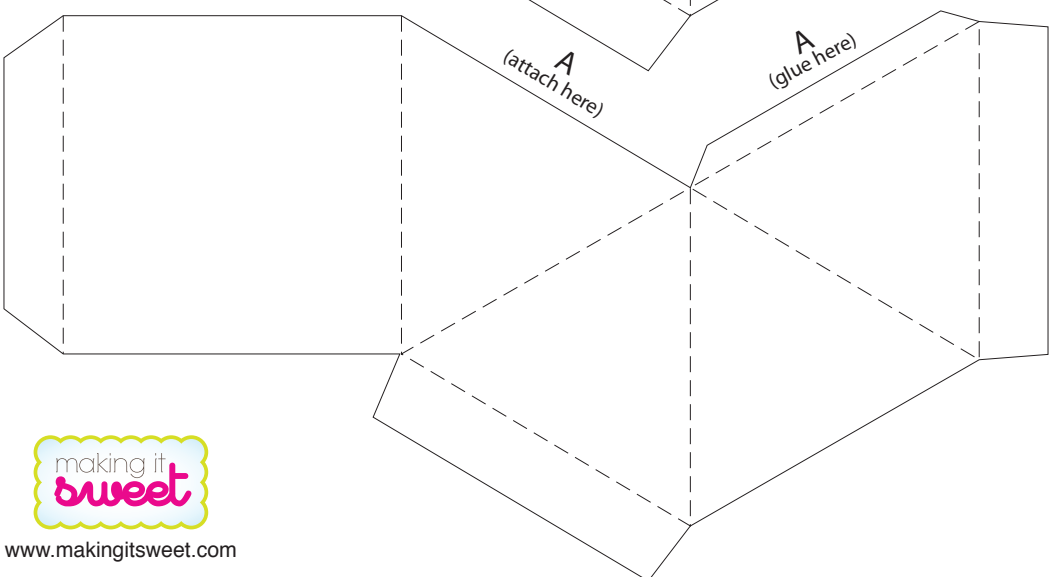
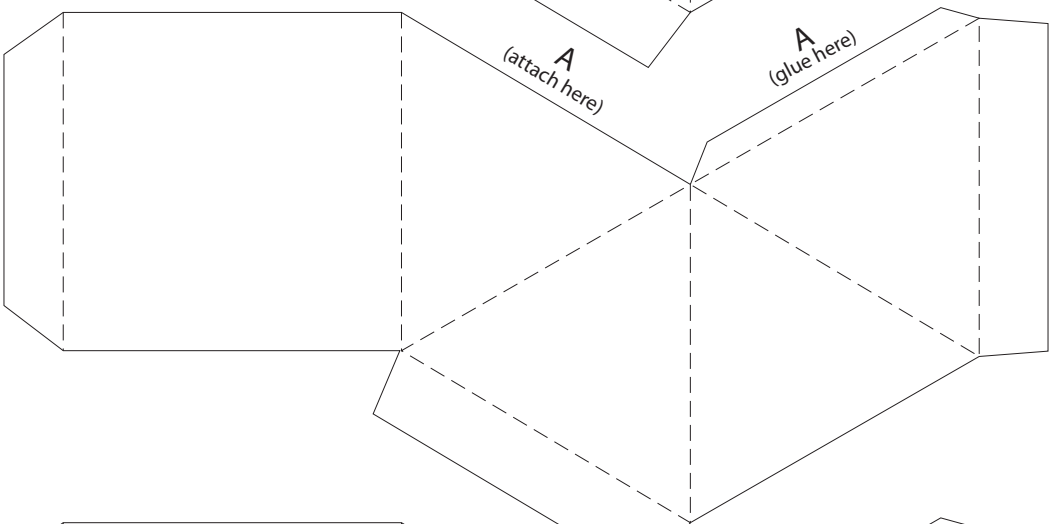
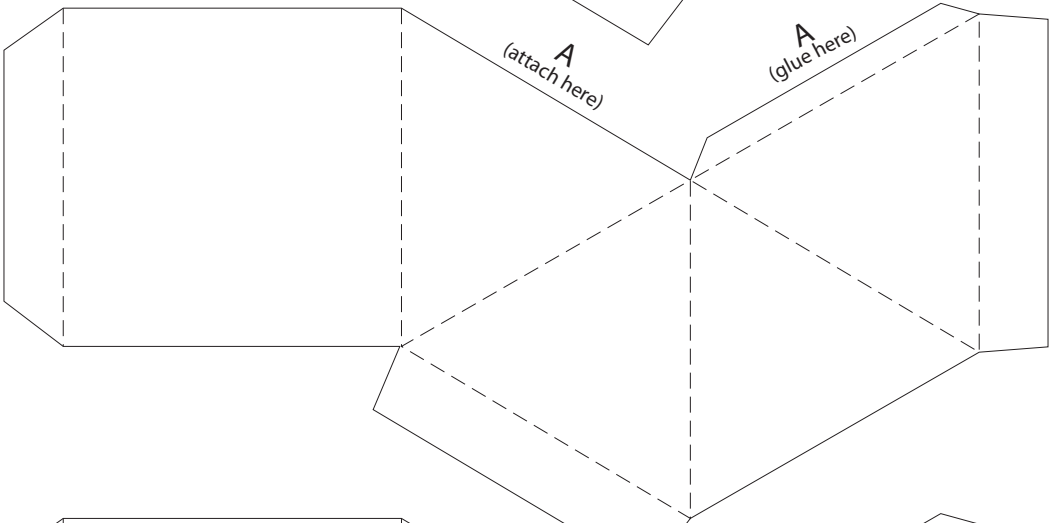
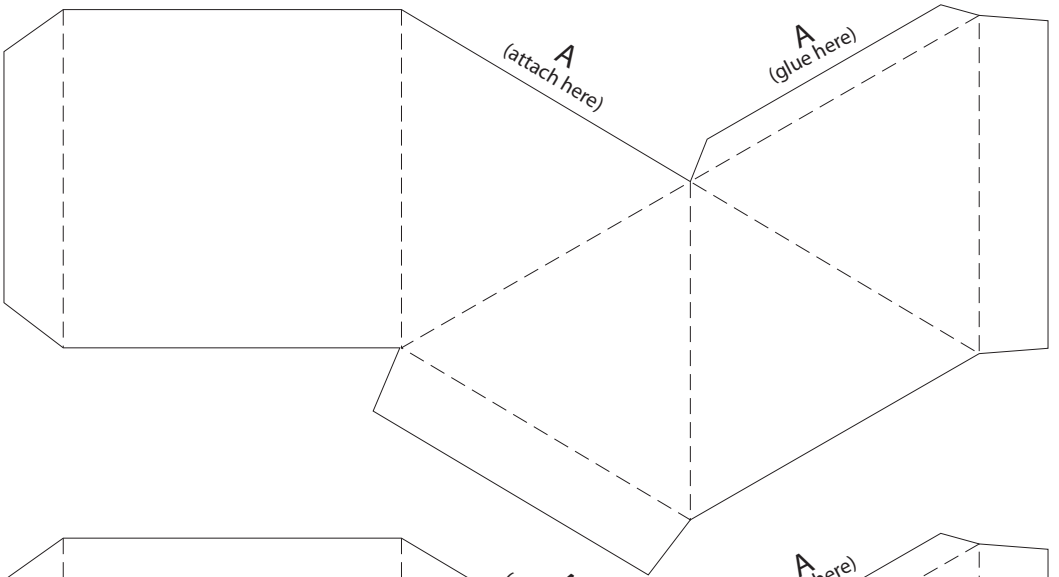
Pyramid Box

For 8.5"x11" paper.

1.75" x 1.75" base

Cut at solid lines. Score and fold at the dotted lines. Glue on the "right" side of the paper where indicated and attach "A" to "A."





www.makingitsweet.com

Pyramid Box for 6"x12" Paper

Cut at solid lines. Score and fold at the dotted lines.

Glue on the "right" side of the paper where indicated and attach "A" to "A."